



Name: Empress

Type: Survey / Utility Vessel

Launched: 2000

Last Slipped: December 2014

Survey: 2B – AMSA 12 passengers 4 crew

Exemptions for more passengers available

Dimensions:

- Survey length: 22.25m
- Draft: 1.8m
- Beam: 6m

Hull Construction: Aluminium displacement monohull

Machinery:

- Main engines: 2 x 535 HP MTU Series 60
- Gear box: 2 x twin disc MG 5144
- Genset: 1 x 40 KVA Isuzu 1 x 30 KVA Isuzu

Speed & Consumption:

- Cruising speed: 11 knots 70L per hr
- Maximum speed: 17 knots 130L per hr
- Maximum range: 3,450 NM
- Bollard pull: 12 tonnes

Capacity:

- Fuel: 24,000L
- Fresh water: 2000L
- 2 x desalination plant 90L per hr
- Treated sullage tank 2,000L

Deck Equipment:

- Hiab: 1.75 tonne @ 1.5m, 700kg @ 6.5m
- 2 tonne deck winch
- 2.5 tonne a-frame on request
- Side and stern davit
- Multi-beam poles and brackets

Deck Loading

- Maximum load 13 tonnes
- Work deck area 45m²

Electronics

- Radar: Simrad RA40 ARPA radar
- Echo sounders: Simrad ES60
- Chart plotters: C-Plot
- Transas pro tsunami navigation system
- Auto pilot: Simrad AP50
- Radios: VHF & SSB
- Fleet 33 satellite phone/fax
- Internet access via satellite phone & CDMA
- AIS vessel identification and plotting system

Survey Room / Wet Lab

- 15m² working area, air-conditioned, UPS protected, full deck vision, stainless bench, sink, hot and cold running water. Two large computer workbenches with cable access to outside deck area. Large chiller and freezer room for specimen storage.

Galley & Accommodation

- Fully air-conditioned galley & accommodation for 7 personnel plus crew with all amenities
- General information
- Full deck canopy
- 3 steering positions
- Black / grey water tank with sewerage treatment plant
- Fully equipped workshop

Manning: Master, Mate, Engineer and Deckhand/Chef

For charter enquiries, please contact:

John Lanaway **M** 0428 404 400 **E** john@empressmarine.com.au

T 08 9964 9551 **F** 08 9965 4395

www.empressmarine.com.au



SERVICE PACKAGE – ENVIRONMENTAL PROTECTION, PLANNING & RESPONSE

Partnering with Pendoley Environmental enables Empress Marine to incorporate environmental baseline monitoring work for ZPI's using 'indicator species' and provide a strike team(s) for environmental protection work and oiled wildlife response integration with oil spill planning and response, including but not limited to:

- Zones of Potential Impact (ZPI) beach attribute surveys;
- Baseline monitoring programs of ZPI's using 'indicator species';
- In water habitat surveys using satellite telemetry;
- Preparation of Oil Spill Contingency Plans (OSCP's);
- Preparation of Oiled Wildlife Response Plans (OWRP's);
- Coordination and participation in oil spill training and exercises;
- Auditing of OSCP's for compliance;
- Environmental risk assessment planning and stakeholder workshops;
- Purchase of oil spill response and oiled wildlife response equipment; and
- Deployment of 'first strike' personnel, equipment and resources in the event of a spill.

From development of in-water and shoreline environmental and baseline monitoring packages, to oil spill planning and oiled wildlife response – we offer a complete cost-effective package.

For charter enquiries, please contact:

John Lanaway **M** 0428 404 400 **E** john@empressmarine.com.au

T 08 9964 9551 **F** 08 9965 4395

www.empressmarine.com.au

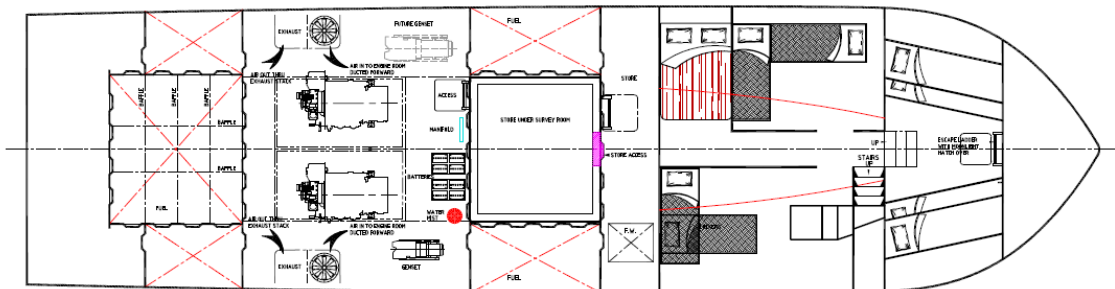
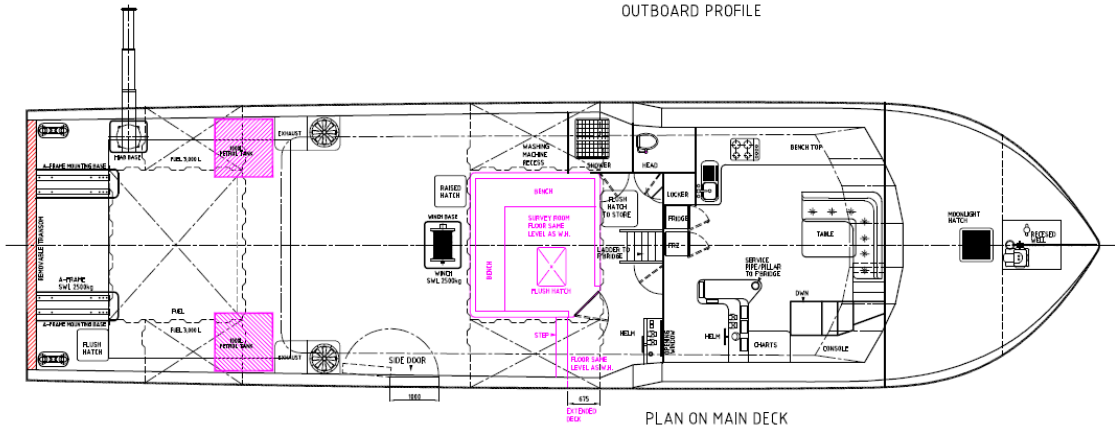
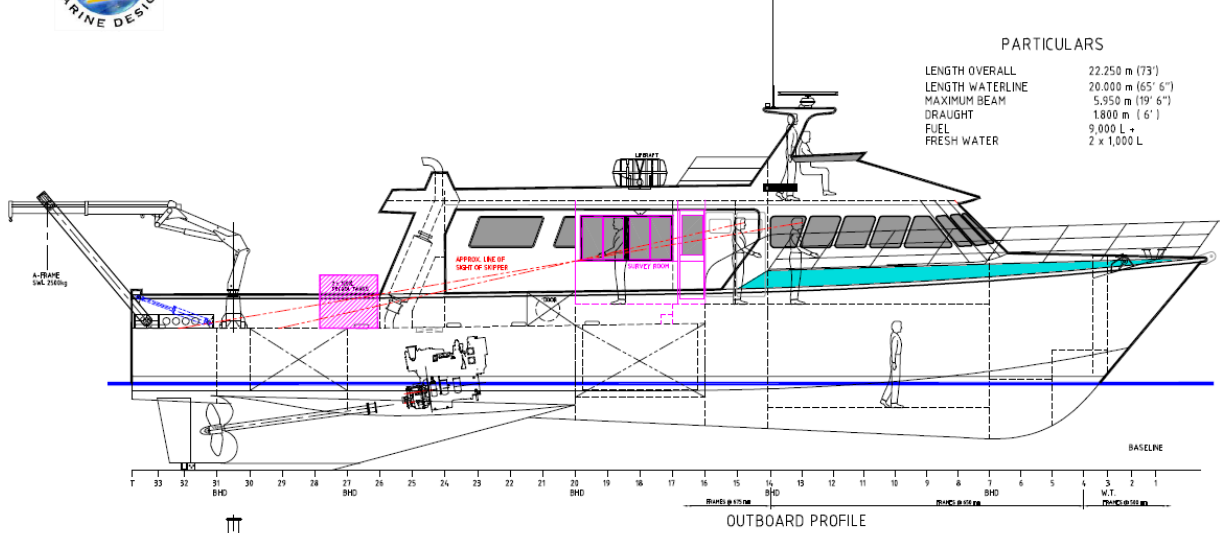


EMPRESS MARINE WORK VESSEL

for Empress Marine Pty Ltd

PARTICULARS

LENGTH OVERALL	22.250 m (73')
LENGTH WATERLINE	20.000 m (65' 6")
MAXIMUM BEAM	5.950 m (19' 6")
DRAUGHT	1.800 m (6')
FUEL	9,000 L +
FRESH WATER	2 x 1,000 L



For charter enquiries, please contact:

John Lanaway M 0428 404 400 E john@empressmarine.com.au

T 08 9964 9551 F 08 9965 4395

www.empressmarine.com.au